

ARRIVING SOON

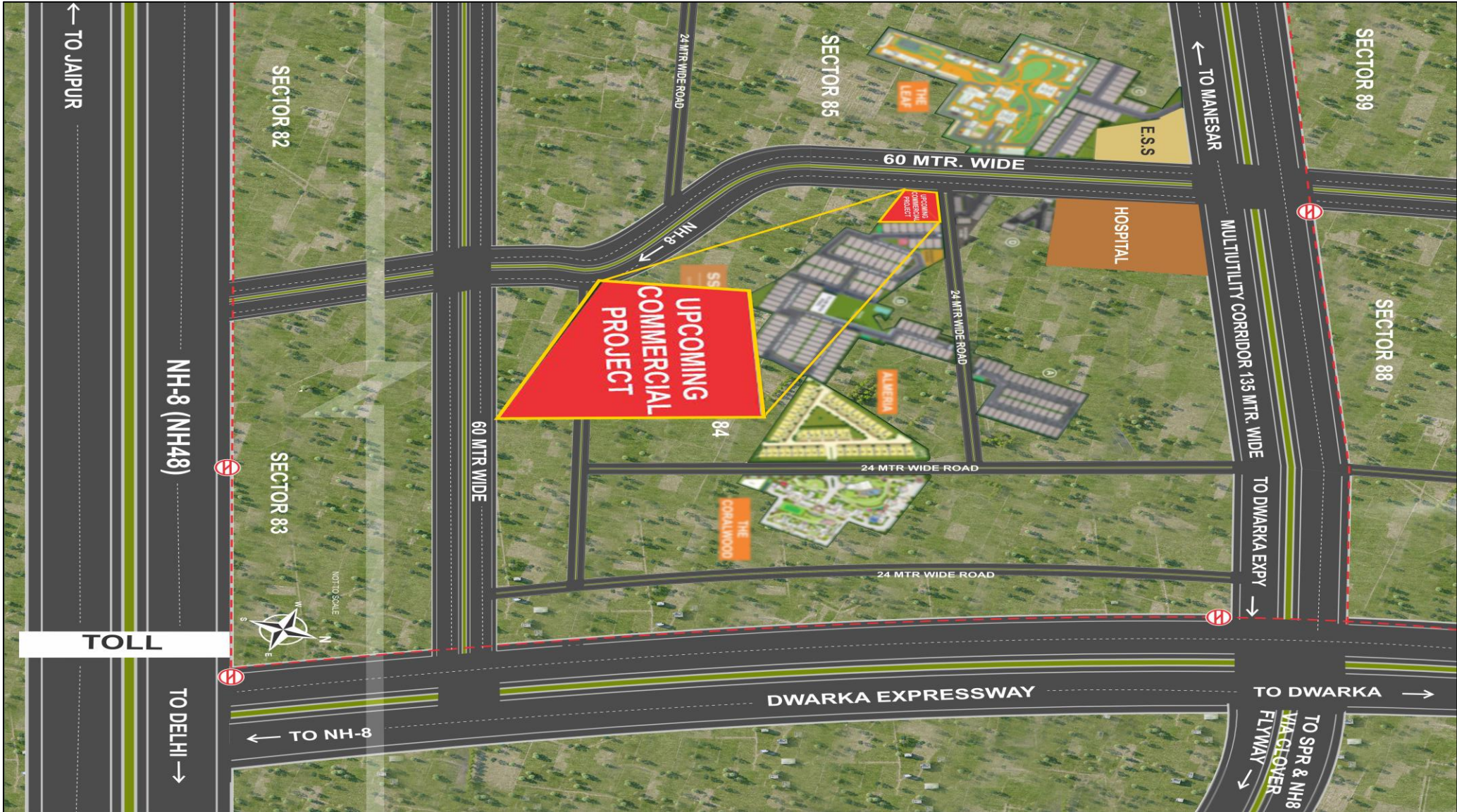
Commercial Project

Sector-84, New Gurugram



- *Upcoming commercial project by SS Group at sector-84, New Gurugram, with 1 acre area, surrounded by residential group housing and amenities.*
- *It's a low rise retail commercial with hypermarket compared to similar projects in the vicinity.*

Connectivity



Layout



Ground Floor Plan

Layout



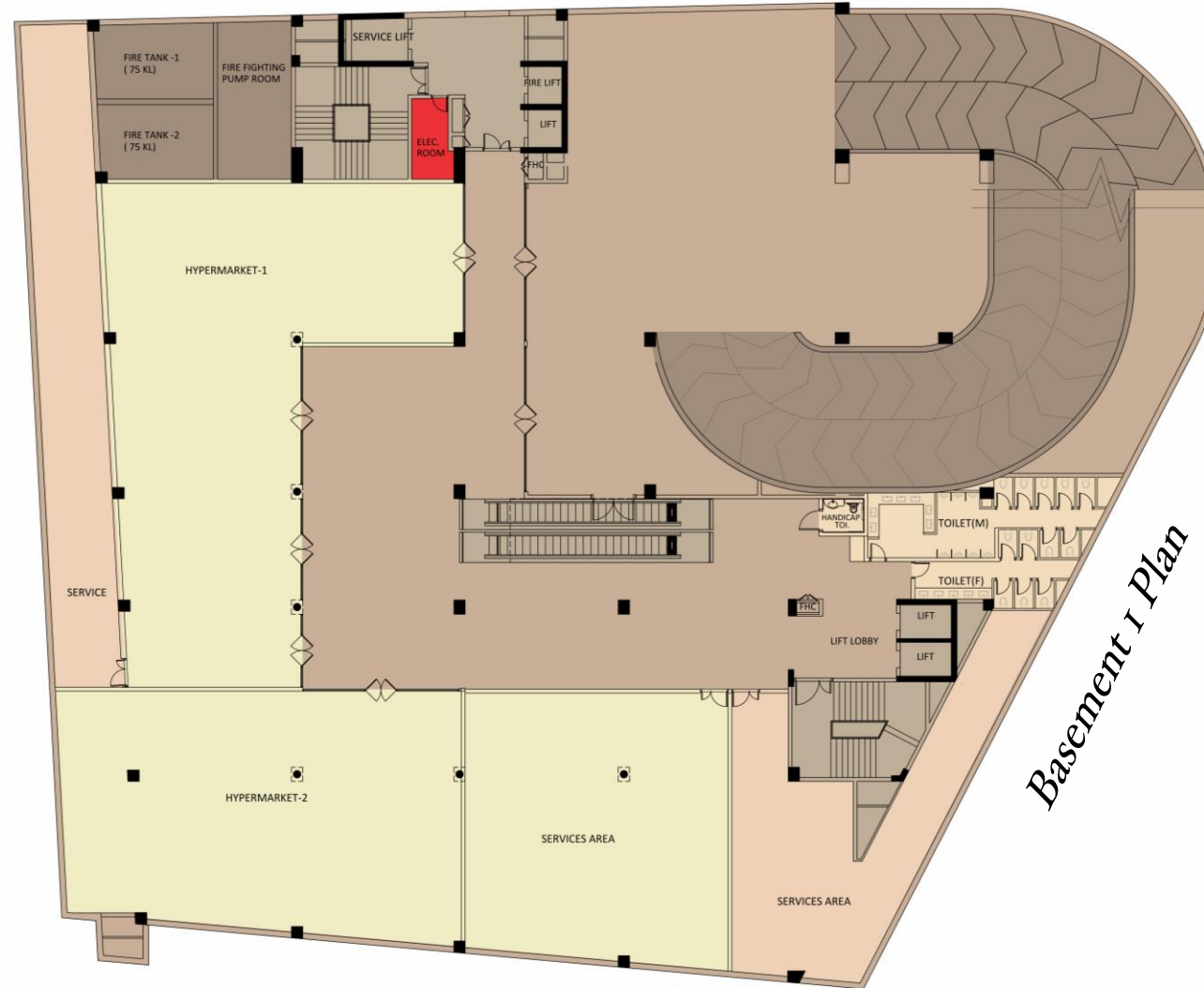
First Floor Plan

Layout



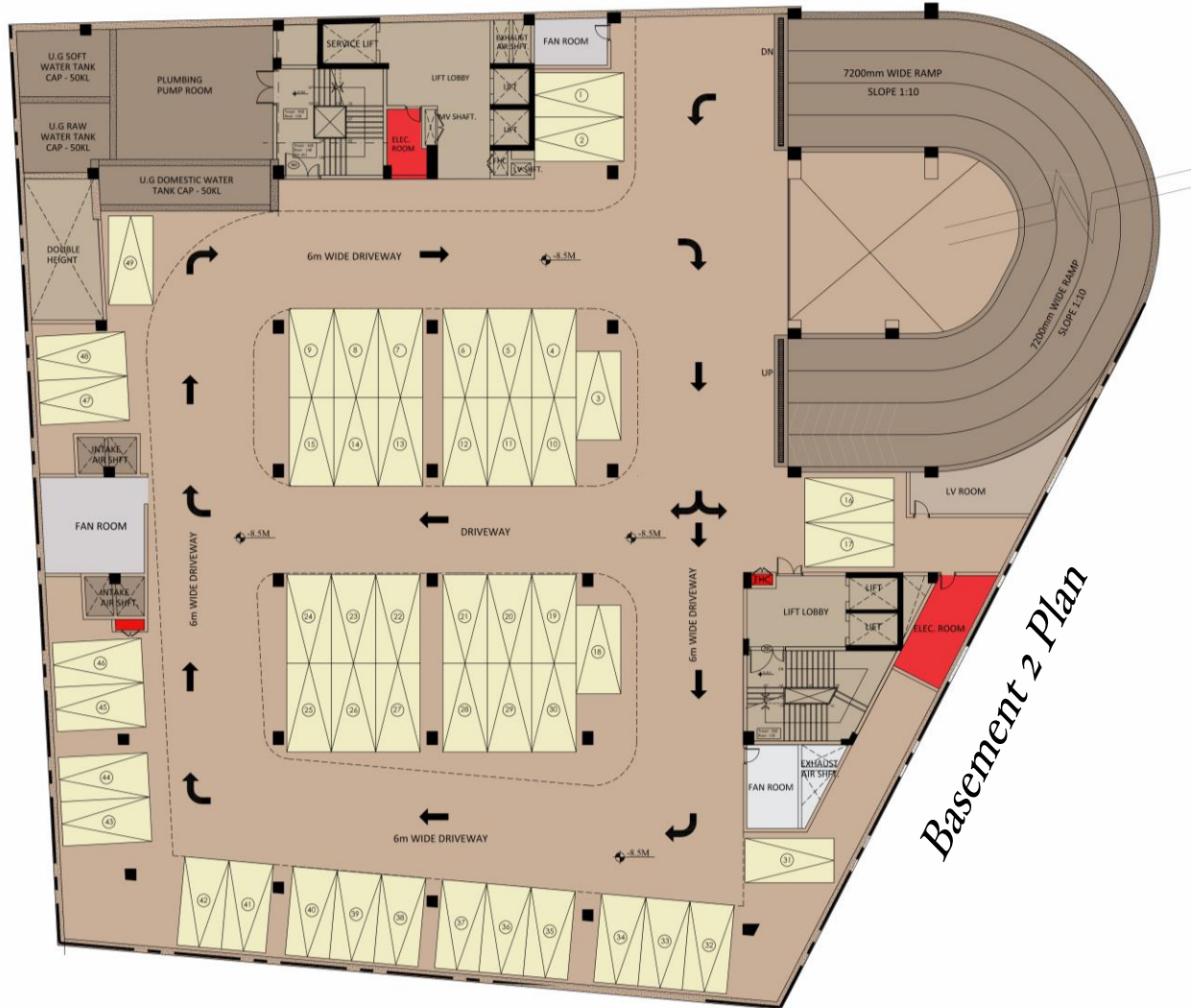
Second Floor Plan

Layout



Basement 1 Plan

Layout



Basement 2 Plan

Location Map

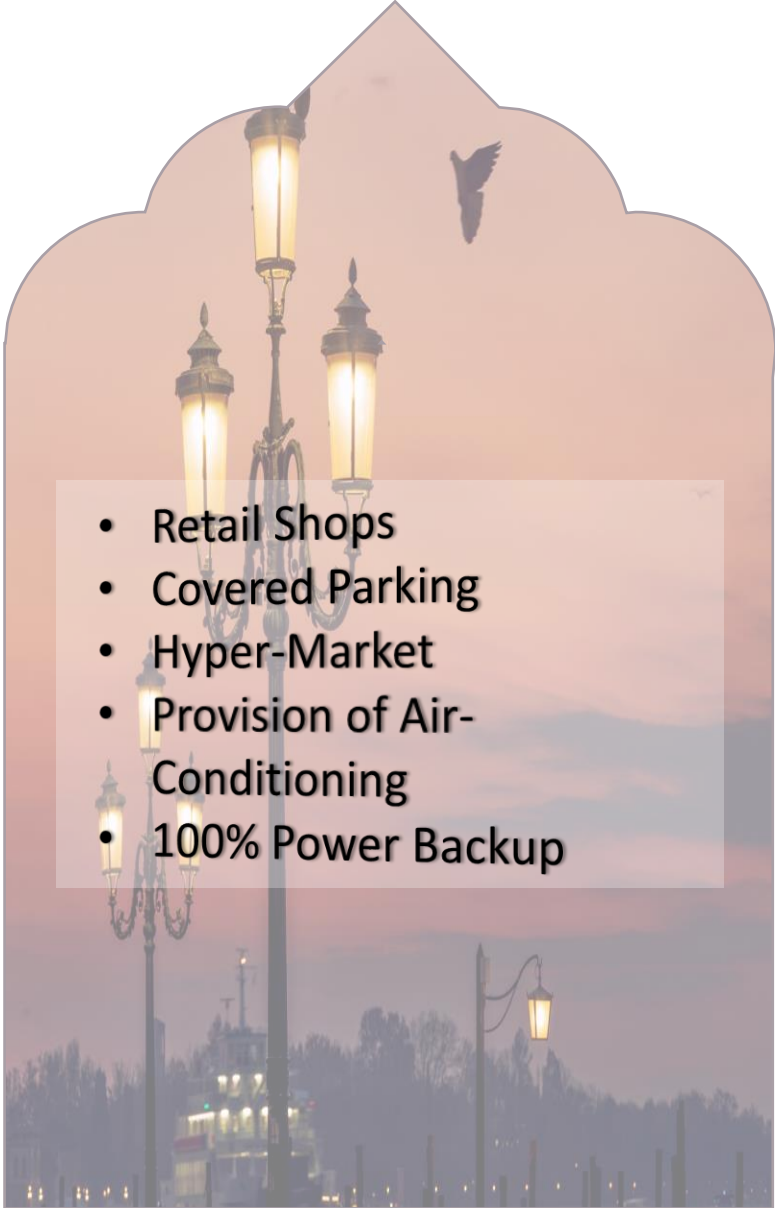


SPECIFICATION



Key Features



- 
- Retail Shops
 - Covered Parking
 - Hyper-Market
 - Provision of Air-Conditioning
 - 100% Power Backup

Vicinity

*1 km from
Dwarka
Expressway*

*2.5 km from
NH48
(NH8)*

*3.5 km from
Southern
Periphery
Road*

*5.8 km from
Manesar*

*11.2 km
from Rajiv
Chowk*

*24.6 km
from IGI
Airport*

Vicinity

SCHOOLS

- *Delhi Public School*
- *St. Xavier's High School*
- *RPS International School*

HOSPITALS

- *Arc Multi Specialty Hospital*
- *Aarvy Super Specialty Hospital*
- *Miracle Apollo Hospital*

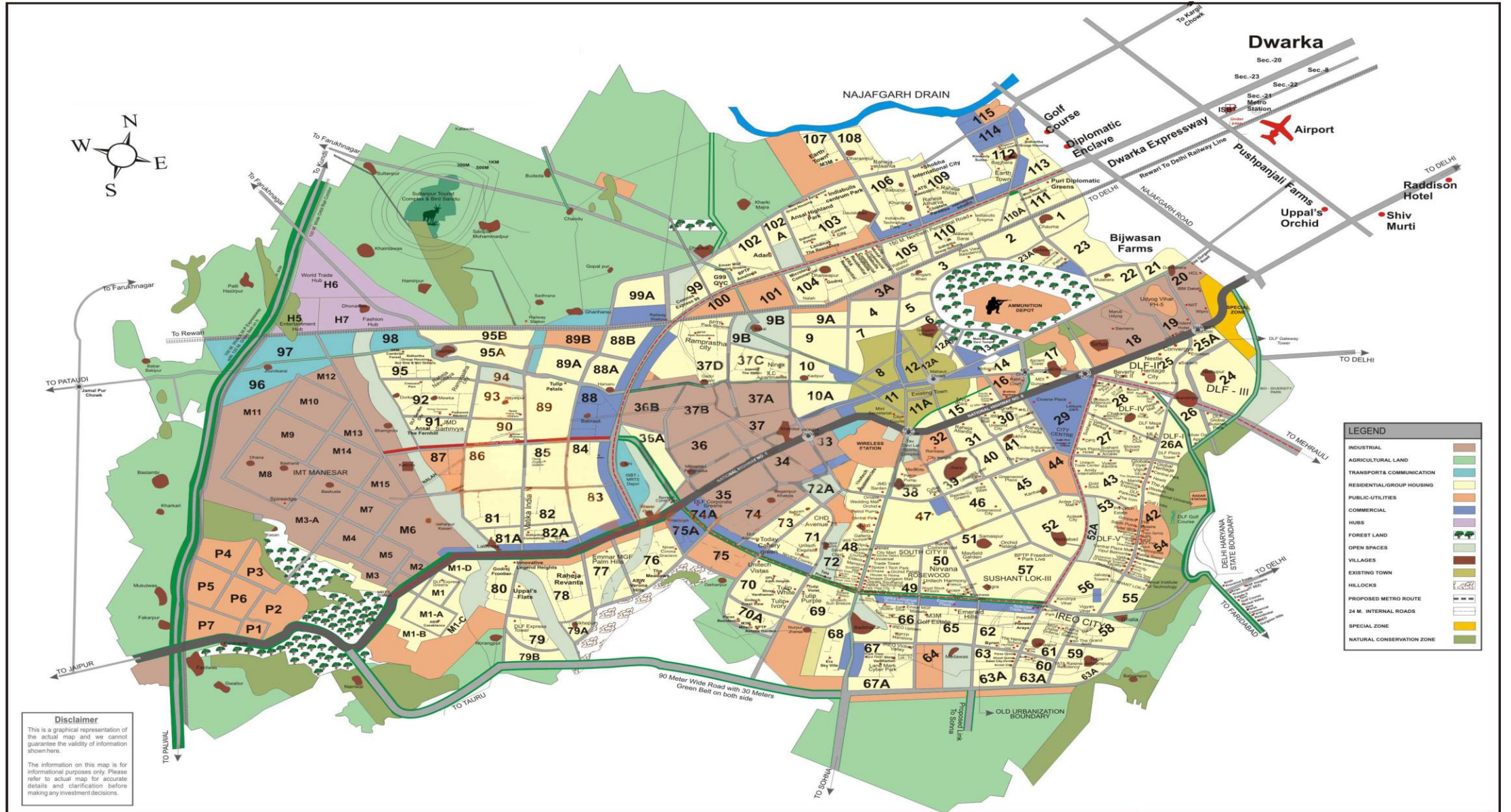
HOTELS

- *Hyatt Regency*
- *Ginger Manesar*
- *Hilton Garden Inn*

RETAILS

- *SS Omnia 86*
- *Sapphire 83*
- *Town Square*
- *SS Highpoint*

Sector Plan



Thank You !